

# ECUMASTER ADU

Application Note



**ECUMASTER EMU CLASSIC**

Revision 1.1

## 1. Copyright and trademarks

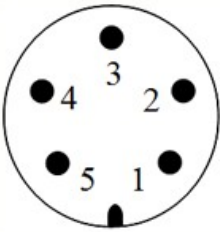
All trademarks, service marks, trade names, product names and logos appearing in this document are the property of their respective owners.

## 2. Introduction

This application note explains how to connect and configure the ADU with the ECUMASTER EMU CLASSIC via Serial connection.

## 3. Electrical connection

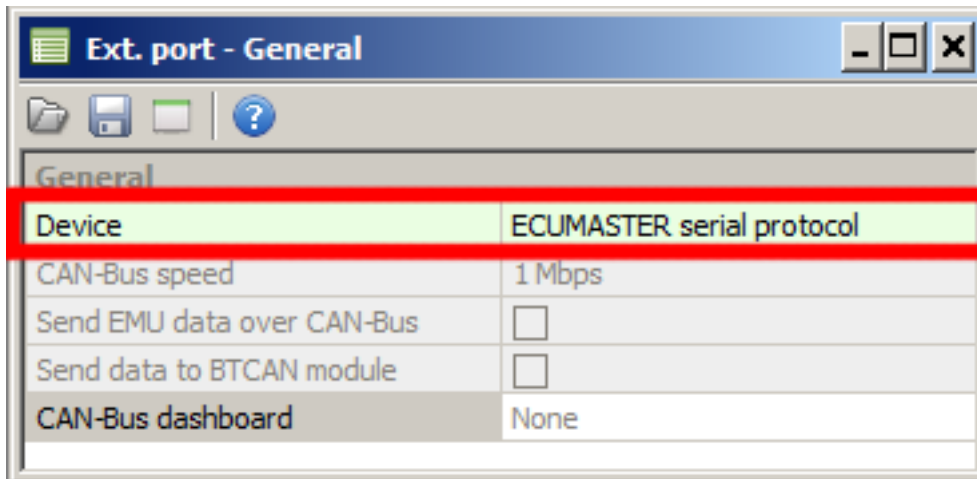
The Ecumaster EMU has a 5 way circular connector where you will find the serial connections. The picture below shows the connector pinout.

	1 – Rx ( <i>Serial receive</i> )
	2 – Tx ( <i>Serial transmit</i> )
	3 - +3,3V
	4 - Ground
	5 - +5V

Terminal #2 of circular connector (*Tx*) should be connected to ADU terminal #7 (*Rx* input). It is recommended to use shielded cable for this connection.

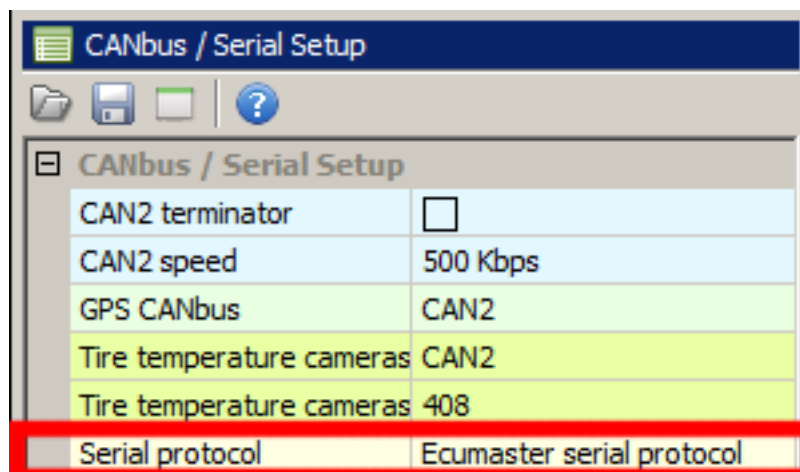
#### 4. EMU Classic configuration

The EMU needs to be configured prior to communication with ADU. The serial communication options are available in the “*Configuration / Ext. port / General*” window which can be accessed through the drop-down menus on the left side of the software. Select “*Ecumaster serial protocol*” under “*Device*”

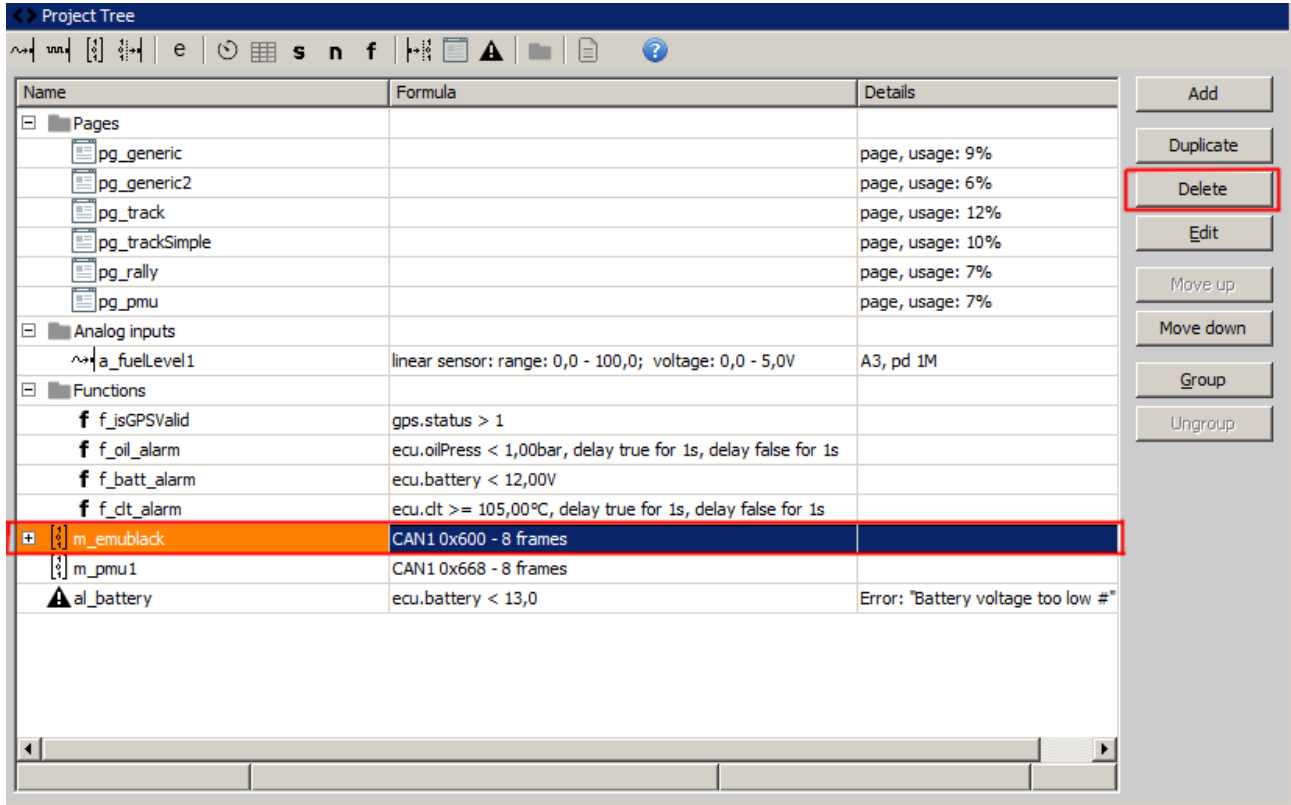


#### 5. ADU configuration

To configure the ADU, the Ecumaster serial protocol should be selected in “*CANBus / Serial Setup*”. To open the “*CANBus / Serial Setup*” press F9 to open the pane selector and then select “*General / CANBus Serial Setup*”.



**CAN messages take priority over Serial, so please ensure that no ECU CAN messages are present in the Project Tree pane. Make sure no CAN inputs override used ecu.\* channels!**



Use *Delete* button to remove existing ECU mob.

## 6. Supported channels

ADU channel	Description
ecu.analog1	Analog #1 voltage
ecu.analog2	Analog #2 voltage
ecu.analog3	Analog #3 voltage
ecu.analog4	Analog #4 voltage
ecu.afr	Air to fuel ratio
ecu.baro	Barometric pressure
ecu.battery	Battery voltage
ecu.clt	Engine coolant temperature
ecu.ecuTemp	ECU internal temperature
ecu.egt1	Exhaust gas temperature #1
ecu.egt2	Exhaust gas temperature #2
ecu.ethanolContent	Fuel ethanol content
ecu.fuelTemp	Fuel temperature
ecu.fuelPressEffective	Effective fuel pressure
ecu.fuelLevel	Fuel level
ecu.fuelPress	Fuel pressure
ecu.gear	Gear
ecu.iat	Intake manifold temperature
ecu.injPW	Injection pulse width
ecu.injDC	Injectors DC
ecu.ignAngle	Ignition advance
ecu.ignDwell	Ignition coil dwell
ecu.knockLvl	Knock level
ecu.lambda1	Lambda #1
ecu.lambda1Trgt	Lambda #1 target
ecu.map	Manifold absolute pressure
ecu.oilTemp	Oil temperature
ecu.oilPress	Oil pressure
ecu.rpm	Engine RPM
ecu.speed	Vehicle speed
ecu.seclnjPW	Secondary injectors pulse width
ecu.tableSet	Current table set
ecu.tps	Throttle position